

ANNUAL EXAMINATION:

Instructions:

1. There are questions
2. Attempt all questions
3. There are 32 questions all
4. Section A Consist: 10 Questions of one marks each
5. Section B Consist: 20 Questions of two marks each
6. Section C Consist: 05 Questions of three marks each
7. Section D Consist: 05 Questions of five marks each
8. Section E Consist: 2 Questions based on Diagram carries five marks each.



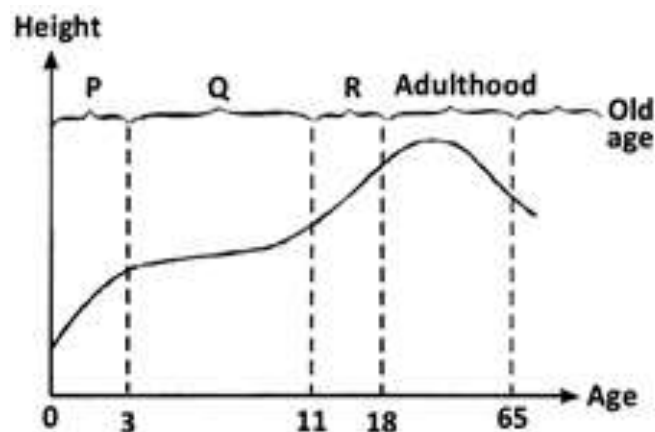
Maximum marks: 80

CLASS VIII SCIENCE

Time Allowed
2Hrs. 30 minutes

SECTION A – MULTIPLE CHOICE QUESTION – 10 X 1 = 10

1. Two mirrors A and B are placed at right angles to each other. A ray of light incident on mirror A at an angle of 25° falls on mirror B after reflection. The angle of reflection for the ray reflected from mirror B would be 1
 - (a) 25°
 - (b) 50°
 - (c) 65°
 - (d) 115°
2. Which of the following represents growth periods labelled as P, Q and R? 1



- (a) P - Infancy, Q-Childhood, R-Old age
- (b) P - Infancy, Q-Childhood, R-Adolescence
- (c) P-Adulthood, T-Adolescence, R-Old age
- (d) P-Childhood, Q-Infancy, R-Adolescence

3. Force of friction is dependent on ____

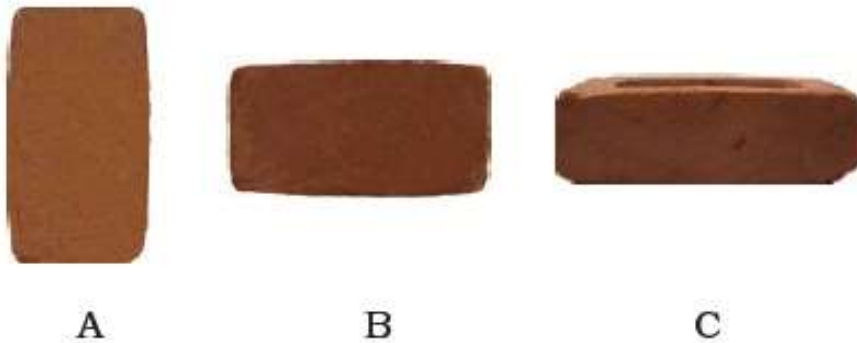
- (a) roughness of surface
- (b) smoothness of surface
- (c) inclination of surface
- (d) all of these



1

4. A brick is kept in three different ways on a table as shown in Figure. The pressure exerted by the brick on the table will be:

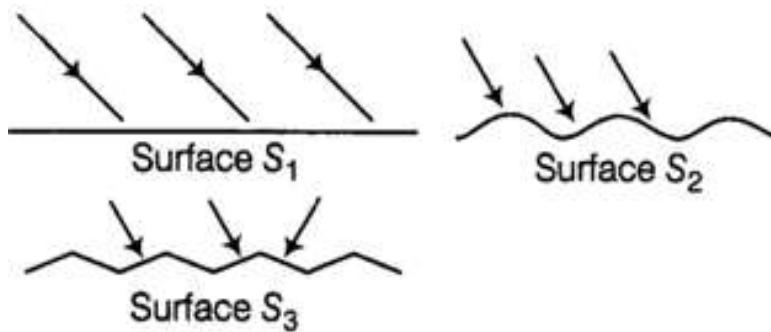
1



- (a) maximum in position A
- (b) maximum in position B
- (c) maximum in position C
- (d) equal in all cases.

5. Light is falling on surfaces S₁, S₂ and S₃ as shown in the figure.

1



Surfaces on which the angle of incidence is equal to the angle of reflection is/are:

- (a) Only S₁
 - (b) S₁ and S₂
 - (c) S₂ and S₃
 - (d) All the three surfaces
6. Given below are events that lead to pregnancy and development of embryo.
- (i) Fertilization of egg
 - (ii) Maturation of egg
 - (iii) Release of egg
 - (iv) Embedding of embryo in thickened uterine wall.

1

Which of the following options gives the correct order of sequence in which they occur? 1

- (a) i, ii, iii, iv,
- (b) ii, i, iii, iv
- (c) i, iv, ii, iii
- (d) ii, iii, i, iv.



7. The strength of force is expressed by? 1

- (a) weight
- (b) mass
- (c) magnitude
- (d) longitudinal force

8. Whenever the surfaces in contact tend to move or move with respect to each other, the force of friction comes into play 1

- (a) only if the objects are solid.
- (b) only if one of the two objects is liquid.
- (c) only if one of the two objects is gaseous.
- (d) irrespective of whether the objects are solid, liquid or gaseous.

9. Which of the following statements are correct? 1

- (i) Sound is produced by vibrations.
- (ii) Sound requires a medium for propagation.
- (iii) Light and sound both require a medium for propagation.
- (iv) Sound travels slower than light.

- (a) i & ii only
- (b) i, ii & iii only
- (c) ii, iii & iv only
- (d) i, ii & iv only

10. Which of the following metals is used in electroplating to make objects appear shining?

- (a) iron
- (b) copper
- (c) chromium
- (d) aluminium

SECTION B –10 X 2 = 20 ANSWER THE FOLLOWING

11. Read the passage and answer the following:

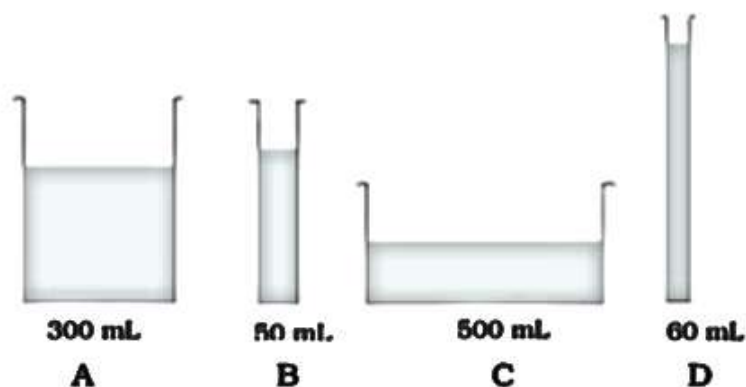
Two women are of the same weight. One wears sandals with pointed heels while the other wears sandals with flat soles. 2

- (a) Which one would feel more comfortable while walking on a sandy beach?
- (b) Give reasons for your answer.

12. Observe the diagram and answer the following

2

Observe the vessels A, B, C and D shown in Figure carefully:



Volume of water taken in each vessel is as shown. Arrange them in the order of decreasing pressure at the base of each vessel. Explain.

13. Observe the experiment and answer the following:

2

While demonstrating an experiment to show whether the given liquid conduct electricity or not to the students, teacher reminded everybody that one should not conduct experiment with the Electric supply from the mains or a generator or an inverter. They should use electric cells for the activity.

2

(a) Do liquids conduct electricity?

(b) Why we should not use electric source from mains generator or an inverter?

14. During adolescence, the body of boys and girls undergoes certain changes. Given below are few of those changes.

2

- a. Broad shoulders
- b. Wider chests
- c. Wider region below waist
- d. Growth of muscles
- e. Development of mammary glands
- f. Growth of facial hair
- g. Development of sex organs
- i. High-pitched voice

Categorise these changes into those that occur in boys and those that occur in girls.

15. Does any part of our body vibrate when we speak? Name the part.

2

16. How is the conductivity of liquids tested?

2

17. Name the hormone which would be released during the following situations: 2

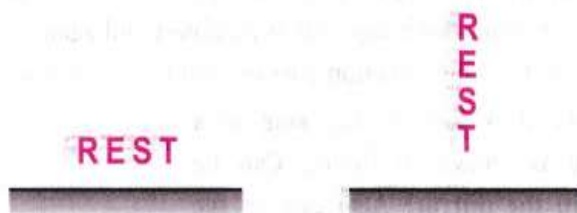
(a) Development of caterpillar to moth.

(b) Development of tadpole to frog.



18. Why are we not crushed by atmospheric pressure? 2

19. Figure given below shows the word REST written in two ways in front of a mirror. Show how the word would appear in the mirror. 2



20. Give reason: 2

(i) We have two identical metal sheets. One of them is rubbed with sand paper and the other with ordinary paper. The one rubbed with sand paper shines more than the other.

(ii) While travelling on a rickshaw, you might have experienced that if the seat cover is very smooth, you tend to slip when brakes are applied suddenly

SECTION C – 5 X 3 = 15

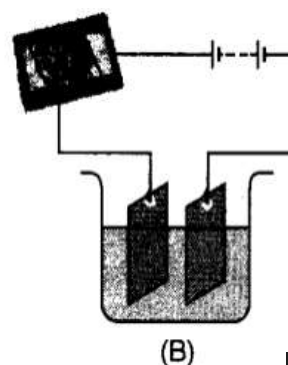
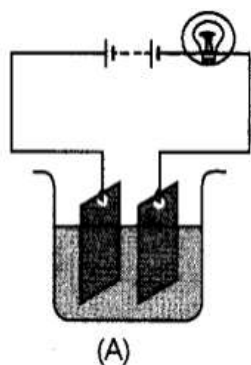
21. Give a suitable word for each of the following statements. 3

(a) The site which responds to a hormone.

(b) Name of a gland which transports secretions through ducts.

(c) Chemicals which control changes at adolescence stage.

22. Observing that the bulb does not glow in the circuit shown below in A, Rahul changed the circuit as shown in B. He observed deflection in the magnetic compass. 3





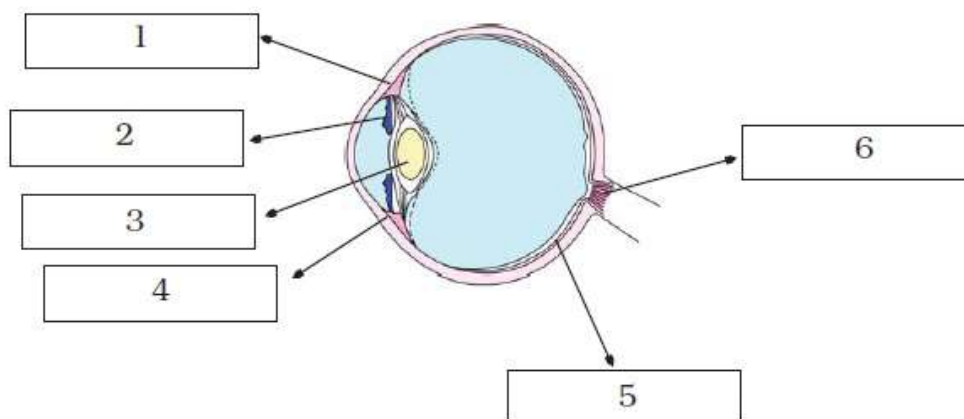
- What does the deflection in magnetic compass indicate?
- Why did the bulb not glow in A?
- What would be the effect of increase in the number of turns in the coil wound around the magnetic compass in B?

23. Given below are certain food items required for proper nourishment of adolescents.

Name the nutrients present in the food items and write their functions. 3

S. No.	Food items	Major Nutrient	Functions
1.	Pulses and nuts		
2.	Oranges and amla		
3.	Sugar, roti		
4.	Oils		
5.	Vegetables		

24. Write down the names of parts of the eye in the blank spaces shown in figure. 3



25. How is sound produced and how is it transmitted and heard by us? 3

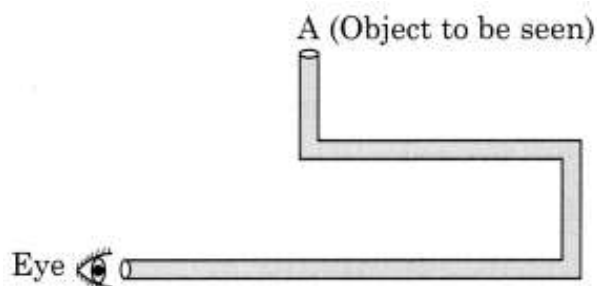
SECTION D – 5 X 5 = 25

26. Sheema had a very soft and smooth skin during her childhood. As she entered adolescence, she developed pimples on her face, her body became taller compared to her face. She got worried of all of the sudden changes. Her mother explained that all these changes are normal and advised her to wash her face at regular intervals. 5

- Why Sheema's mother advised Sheema to wash her face at regular intervals?



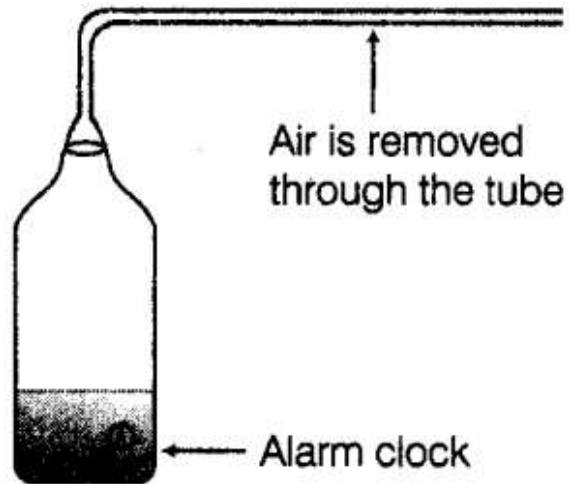
- b) What is the reason for appearance of pimples on her face?
 c) Why Sheema experienced disproportionate growth of the body?
 d) What are hormones?
 e) Name the female sex hormone.
27. Give reasons for the following. 5
- i. Air resistance increases with increase in speed of the moving object.
 - ii. We sprinkle talcum powder on the board when we play carrom.
 - iii. It is slippery and difficult to walk on a floor with new tiles.
 - iv. Birds and aeroplanes have streamlined bodies.
 - v. Rollers skates have ball bearings in the wheels.
28. Describe an experiment to show that air exerts pressure in all directions. 5
29. Most liquids that conduct electricity are solutions of acid, bases and salt . Justify the statement. 5
30. Anil planned an activity to observe an object A through pipes as shown in the given figure, so that he could see objects which he could not directly see. 5



- (a) How many mirrors should he use to see the object?
- (b) Indicate the positions of the mirrors in the figure.
- (c) What must be the angle with respect to the incident light at which he should place the mirrors?
- (d) Indicate the direction of rays in the figure.
- (e) If any of the mirrors is removed, will he be able to see the object?

SECTION E – DIAGRAM BASED QUESTIONS 2 x 5 = 10

31. An alarm bell is kept inside a vessel as shown in figure. A person standing close to it can distinctly hear the sound of alarm. Now, if the air inside the vessel is removed completely, how will the loudness of alarm get affected for the same person? 5



32. Fill the blank circles in figure and identify the sex of child A and B.

5

