

Summative Assessment I

Class: IV

SCIENCE

Time: 3 Hrs.

Marks: 85

Handwriting: 5

Total: 90

General Instruction

1. All questions are compulsory.
2. Maintain answer sheet neatly.



SIMPERING
ASSESSMENT AND EVALUATION



I. Multiple choice questions:

(10 x 1 = 10)

1. Which of these plants does not have chlorophyll?



A)



B)



C)

2. Terrestrial animal breath through:

A) Air holes

B) Gills

C) Lungs

3. From the mouth the food passes through the food pipe into the

A) Small intestine

B) Large intestine

C) Stomach

4. Identify the following teeth



A) Molar

B) Premolar

C) Canine



SIMPERING
ASSESSMENT AND EVALUATION

5. Which one of the following does not belong to grass family?



A)



B)



C)

6. Rain forests are mainly found in:

A) Equator region

B) Temperate zone

C) Arctic region

7. Carnivores means:

A) Flesh eating animals

B) Plant eating animals

C) Animal that eats both plant and animals



8. The number of grinding teeth in each jaw is _____.

A) 5

B) 6

C) 7

9. Which one of the following is help us to grow?

A) Carbohydrates

B) Protein

C) Vitamins

10. The following is an example of



A) Food stored in stem

B) Food stored in roots

C) Food stored in fruits



II. Match the following:

(5 x 1 = 5)

(i) Stomata

(a) food factory of the plant

(ii) Leaf

(b) through veins

(iii) Chlorophyll

(c) tiny holes in the underside of a leaf

(iv) Starch

(d) green substance that traps sunlight

(v) Water

(e) stored food in plants



III. Fill in the blanks

(2 + 1+1+1+1 = 6)

1. Photosynthesis is the process in which a plant makes _____ with the help of _____ from the soil and _____ from the air.

2. The gas _____ is given out during this process, which we use for breathing.

3. Plants store extra food in the form of _____ in the leaves, stems, or roots.

4. The larva of a butterfly is called _____

5. _____ is the disease caused by protozoa.

IV Answer the following:

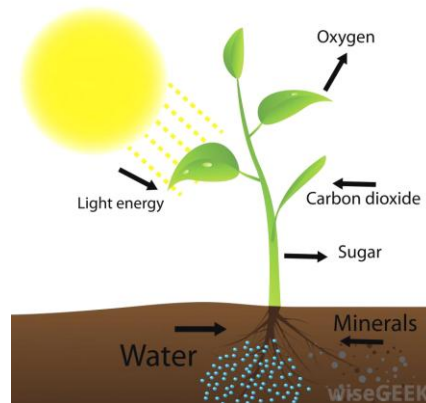
(10 x 3 = 30)

1. Name the plants of the grass family which are:

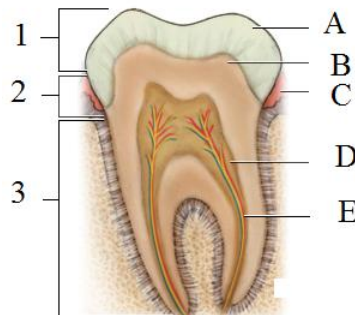
- a) Used as food for humans and animals. (any 2)
- b) Used for making brooms, baskets, chains, mat etc.
- c) Used for making paper



2. Observe the following diagram and explain about photosynthesis



3. Label the anatomy of a tooth (any six)



4. How does cactus survive without leaves?

5. Draw the four stages of life cycle of a butterfly

6. Complete the following

	Terrestrial	Aquatic	Amphibian
Movement	Legs to move on land		
Breathing Organ		Gills	
Example			Frog

7. Why do aerial animals have light bodies?

8. What is preservation? Name any 2 methods to preserve food.

9. Your class teacher asked you to make a banner to show healthy ways to maintain teeth. Help your teacher.

10. Write the functions of *stomata*

V. Answer the following:

(4)

1. Following plants are called unusual plants. Why



Mushrooms



Croton



Cactus



Moulds

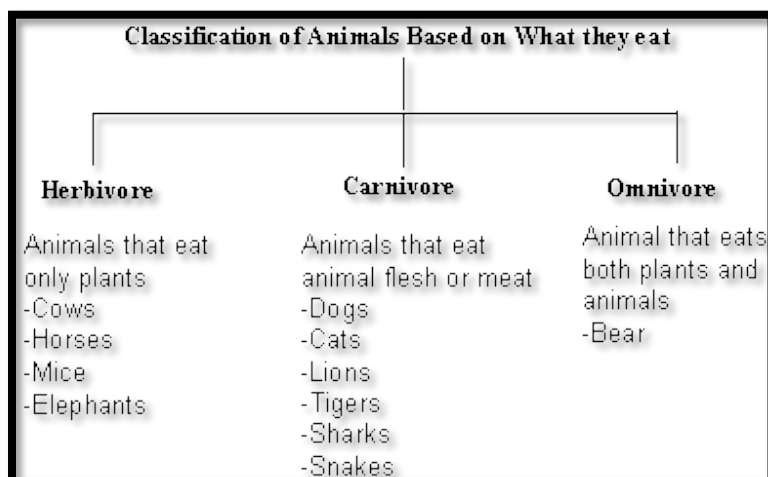
2. 'A balance needs to be maintained between the number of plants and animals'. Explain (4)

3. Complete the following table based on terrestrial plants (4)

Geographical area	Features of the plants	Examples
Mountain Area	1. 2.	
Plain Area	1. 2.	
Desert Area	1. 2.	Cactus and Lichens
Marshy area	1. Roots do not get air as the soil is covered with water 2. Roots grow out of the soil	

4. What are the different ways by which animal reproduce? (4)

5. Observe the flow chart and answer the following. (4)



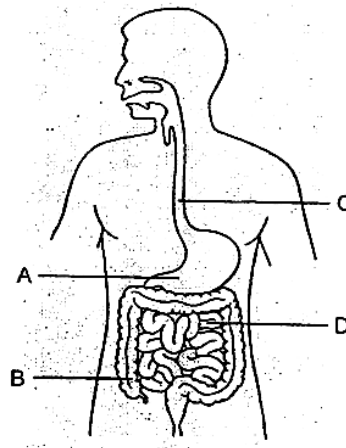
1. Write any two differences between Herbivores and Carnivores.

2. Give two examples for Herbivores, Carnivores and Omnivores.

3. Mosquitoes, Leeches Etc. can't be included in these three categories. Why

6. Label the following diagram:

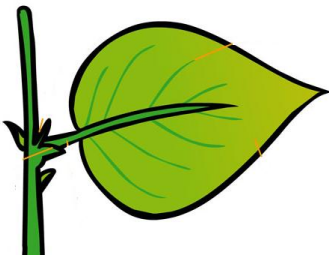
(4)



VI. Answer in detail:

1. Do as directed

(1 + 2 + 2 = 5)



1. Draw the following on your answer sheet and mark midrib and side veins.


2. Write any two functions of midrib

2. Study the following slide and answer the questions:

(2 + 1 + 1 + 1 = 5)

Aquatic Plants

- 2) Fixed Plants:
 - Have roots which are fixed to the bottom of the pond.
 - Have long, hollow stem to reach the surface of the water.
 - Have broad and waxy coated leaves to prevent them from rotting. Example : Lotus, Water Lily
- 3) Underwater Plants
 - These have narrow leaves without any stomata.
 - They breathe through the surface and keep the water clean
 - Example :tape grass, pond weed



Questions

1. Write any two differences between fixed plants and aquatic plants.
2. Write any two features of leaves of underwater plants
3. Give examples for fixed plants
4. Write any two features of stems of fixed plants

