

SAFAL PREPARATORY EXAMINATION

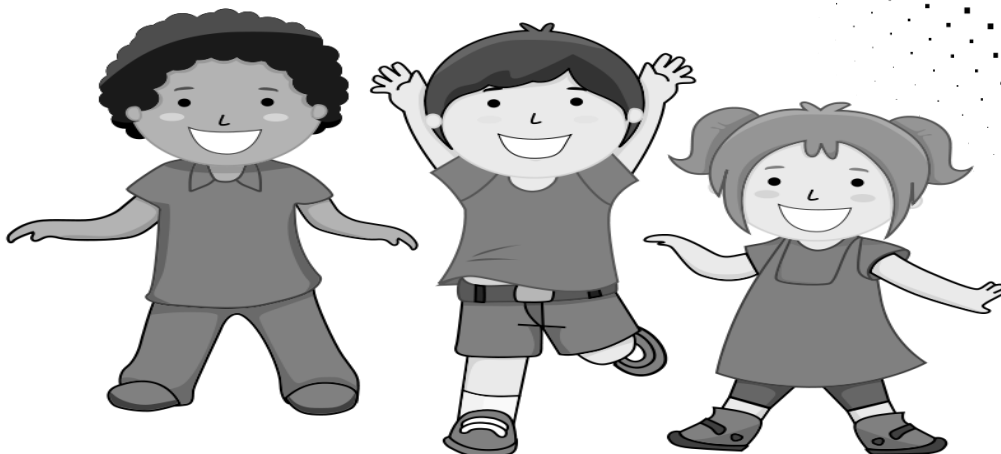
Instructions:

1. There are 30 questions all
2. The test is 1 hour long.
3. You will need: pen, pencil, rubber, and ruler.
4. Try to answer all of the questions.
5. All questions carry equal mark.
6. Check your work carefully.
7. Ask your teacher if you are not sure what to do.

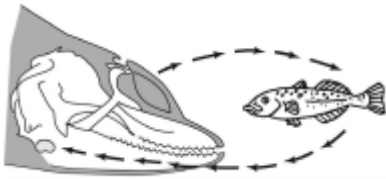
CLASS: 5

SUBJECT: EVS

UNIT: SUPER SENSES



1. Which of the following describes Dolphin's sensing system?



- A) The dolphin smells chemical coming from fish
- B) The dolphin hears sound system made by the movement of the fish
- C) C)The dolphin sees light reflection from the fish
- D) D)The dolphin detect fish with its eyes

2. What helps ants to make this



- A) Visual signals
- B) Auditory signals
- C) Tactile signals
- D) Chemical signals

3. Many times Police will use dogs in their investigation. Which primary sense organ helps dog to find evidence?



- A) Sight
- B) Hearing
- C) Smell
- D) Taste

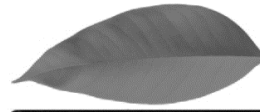
4. Read the following information:

Snakes have a unique way of sensing sound that differs from the hearing mechanisms of most animals, including humans. Snakes lack external ears or eardrums, so they do not have the typical hearing structures found in mammals. Instead, snakes have a specialized hearing system called "vestibular hearing" or "internal hearing." It relies on vibrations and bone conduction to detect sound

How do the snakes detect the sound?

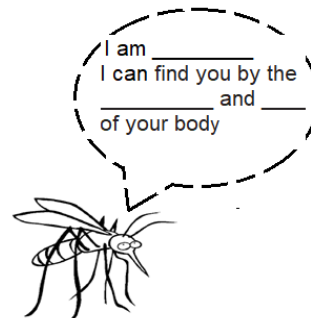
- A) Sound is received in the outer ear.
- B) It relies on vibrations and bone conduction.
- C) Sound receives in Skin
- D) It can't hear sound.

5. Salman measures the length of a leaf with a centimeter ruler
What is the length of the leaf?



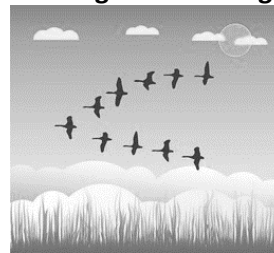
- A) 3 cm
- B) 6 cm
- C) 9 cm
- D) 12 cm

6. Observe the following



- A) Mosquito, sound and touch
- B) Mosquito, smell and heat
- C) Mosquito, taste and sight
- D) Mosquito, noise and blood

7. Birds are navigating long distance. Which sense do birds heavily rely on during migration to navigate their long-distance journeys?



- A) Hearing
- B) Smell
- C) Sight
- D) Taste

8. Observe the image: which animal has the longest sleeping hours?



- A) Cat
- B) Cow
- C) Giraffe
- D) Python

9. Which of the following human activities has directly contributed to the decline of tiger populations?

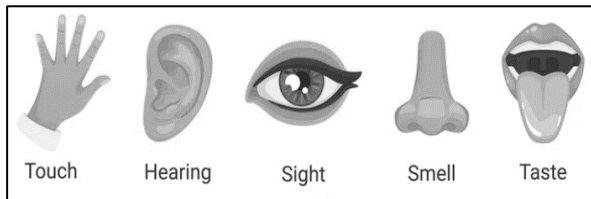
- A) Pollution and industrialization
- B) Deforestation and habitat destruction
- C) Expansion of agricultural land
- D) d) All of the above

10. This national park is famous for



- A) Lion
- B) Elephant
- C) Tiger
- D) Giraffe

10. Select a suitable title for this image



- A) Our Body
- B) Our Sense organs
- C) Human Being
- D) Eyes and ears

11. Which of the following is wrongly matched:

A)	Ear	Hearing
B)	Eyes	Seeing
C)	Tongue	Tasting
D)	Skin	Smelling

12. Ben stated that music is enjoyable. Which sense organ helped him to make this statement.



- A) Eyes
- B) Sound
- C) Ears
- D) Dancing

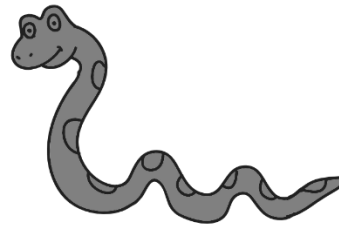
13. We have _____ sense organs.

- A) Five
- B) Three
- C) Six
- D) Four

14. _____ are the organs of sight.

- A) Eyes
- B) Skin
- C) Ear
- D) Head

15. Snakes do not have ears.



- A) External
- B) Internal
- C) Internal or External
- D) any