

Summative Assessment I

Class: VI

SCIENCE

Maximum Marks: 90

Time: 3 Hrs.

General Instruction

1. All questions are compulsory.
2. Maintain answer sheet neatly.



I. Multiple choice question:

5x 1= 5

1. Which of the following materials is not lustrous?

- A) Gold B) Silver C) Wood D) Diamond

2. Which among the following is the best for health?

- A) Boiled Moong seeds B) Roasted Moong seeds
C) Swollen Moong seeds D) Sprouted Moong seeds

3. How many muscles work together to move a bone?

- A) One B) Two C) Three D) Four

4. Which of the following Nutrients is not present in milk?

- A) Protein B) Vitamin-c C) Calcium D) Vitamin - d

5. Iron rim is made slightly smaller than the wooden wheel. The rim is usually Heated before fixing into the wooden wheel, because on heating , the iron rim

- A) Expands and fits onto the wooden box
B) Contracts and fits onto the wooden wheel
C) No change in the size takes place
D) Expands first, then on cooling contracts and fits onto the wooden wheel.

II Answer in one word:

7 x 1=7

1. The bones that join the chest bone and the back bone together to form a box that protects the heart and lungs.
2. The process of making yarn from cotton fibers.
3. The part of the skeleton that is tough but much softer and flexible than the bones found on the upper part of our ear.
4. When the steam comes in contact with the metal plate cooled with ice, you observe water drops falling from the plate. Name the process involved in it.
5. Name the type of disease that occurs due to lack of a particular nutrient over a long period of time.
6. Give two examples of an unstitched fabric.

7. I come out first from the seed when it is soaked in water .I provide anchorage to plants in the soil. Who am I?

III Fill in the blanks:

7 x1 = 7

1. Grain from the bundles of stalk are generally separated by the process of _____
2. Filtration is helpful in separating an insoluble _____ from a _____
3. Earth worms moves by repeated _____ and _____ of muscles
4. Bess collect nectar from flower and covert it into _____
5. The small beads like structures present inside the ovaries are called _____
6. Two examples of animals fibers are _____ and _____
7. One way of making fabric from yarn is weaving . The other way is _____

IV Match the following

5 x1 = 5

Mixtures

Method of separation

- | | | |
|---------------------------------|---|-----------------|
| i) Oil in water | - | a) Decantation |
| ii) Pieces of stones from rice | - | b) Sieving |
| iii) Chalk powder from water | - | c) Filtration |
| iv) Separating butter from milk | - | d) Hand picking |
| v) Tea leaves from tea | - | e) churning |

V Explain the following: (Any three)

3 x 2 = 6

- | | |
|--------------------|------------------------|
| (a) Nutrients | (b) Reversible changes |
| (c) Photosynthesis | (d) Jute plant |

Vi. Differentiate the following: (Any three)

3 x3 = 9

- | | |
|---|---|
| i) Climbers and Creepers | ii) Opaque objects and Transparent object |
| iii) Movement of fish and Movement of snake | iv) Herbivores and Carnivores |

VII Give Reasons: (Any three)

3 x3 = 9

- (a) We must drink 3-4 liters of water every day.
- b) Mixture of salt and sand cannot be separated by winnowing.
- (c) Earth worms are known as "Farmer's Friend".
- (d) A plant with a cut root cannot grow.

VIII) Answer in brief : (Any seven)

7 x3 = 21


1. Rohan is suffering from bleeding gums. Name the deficiency disease he is suffering from. Which vitamin is he lacking in his diet? Name any two source of the vitamin he requires.
2. Why do organism need food? Write three reasons.

3. Sampath is a farmer . His field has black soil and the climate is warm . Which fiber yielding crop in his field ? Name any two useful items that can be made by the fiber Sampath grows in his field.
4. Describe an experiment to show that leaves do not produce starch in the absence of Sunlight.
5. Name any two objects each which can be made from.
- (a) Steel (b) plastic (c) Leather
6. Meera is preparing a solution by mixing sugar in water. After sometimes she finds that some sugar remains undissolved and settles at the bottom of the glass beaker
- a) What type of solution –Saturated or unsaturated did Meera get?
- b) What will happen to the undissolved sugar in the bottom of breaker if she heats it?
7. A shoulder joint is capable of movement in every direction. Name the type of joint a shoulder joint have. Explain how the joint works.
8. Classify the following changes as Reversible or irreversible change.


Stretching Rubber, Frying an Egg , Freezing Orange juice to make ice lolly,
Folding a paper, Ripening of Tomatoes, Explosion of crackers

IX Answer in Details : (Any three)

3 x 5 = 15

1. (a) Mention two functions of root. (2 + 2 + 1)
- (b) Identify the types of root A and B given in the following figure
- 

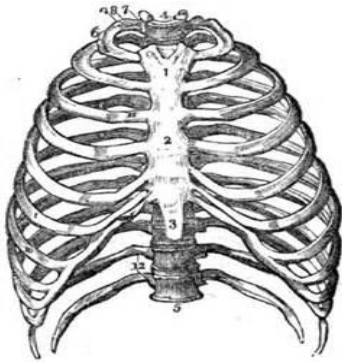
A)



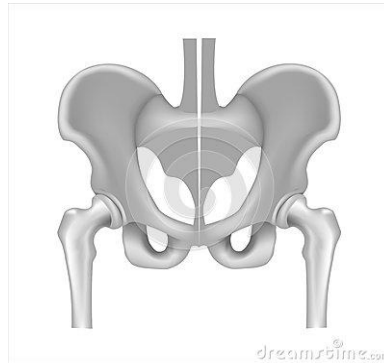
B)
- (c) Which type of roots is found in a Bamboo plant and a Rose plant?
2. Name the major components of our food. State one function of each component. (2 ½ + 2 ½)



3. (a) What is a skeleton ? (1 + 3 + 1)
- (b) Identify the bony structure A, B and C in the given figure



A



B



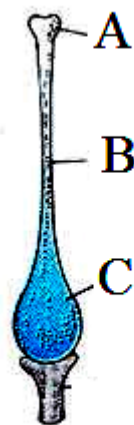
C

- (c) Raju fell on a tree and hurt his ankle . On examination the doctor confirmed that the ankle was fractured. How was it detected?
4. You are provided with a mixture of salt, sand, oil and water .Write the steps involved for the separation of salt, Sand and oil from the mixture by giving an activity along with a diagram.

X Draw or Label:

2 x3 = 6

1. Name A, B and C in the diagram of a pistil.



A typical pistil.

2. Draw

- (A) Leaf with parallel venation
- (b) Leaf with reticulate venation